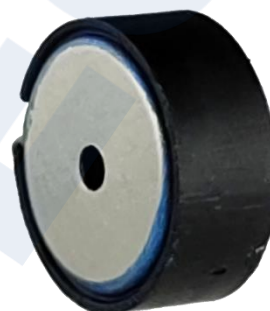


◆ **Model No:** ASDFD5505-0001

- 8mm Transducer Frame.
- 3.1mm Voice Coil DCCA.
- 10 $\mu$ PU+09 $\mu$ PEEK.

◆ **Transducer front and side images:**



◆ **Specifications:**

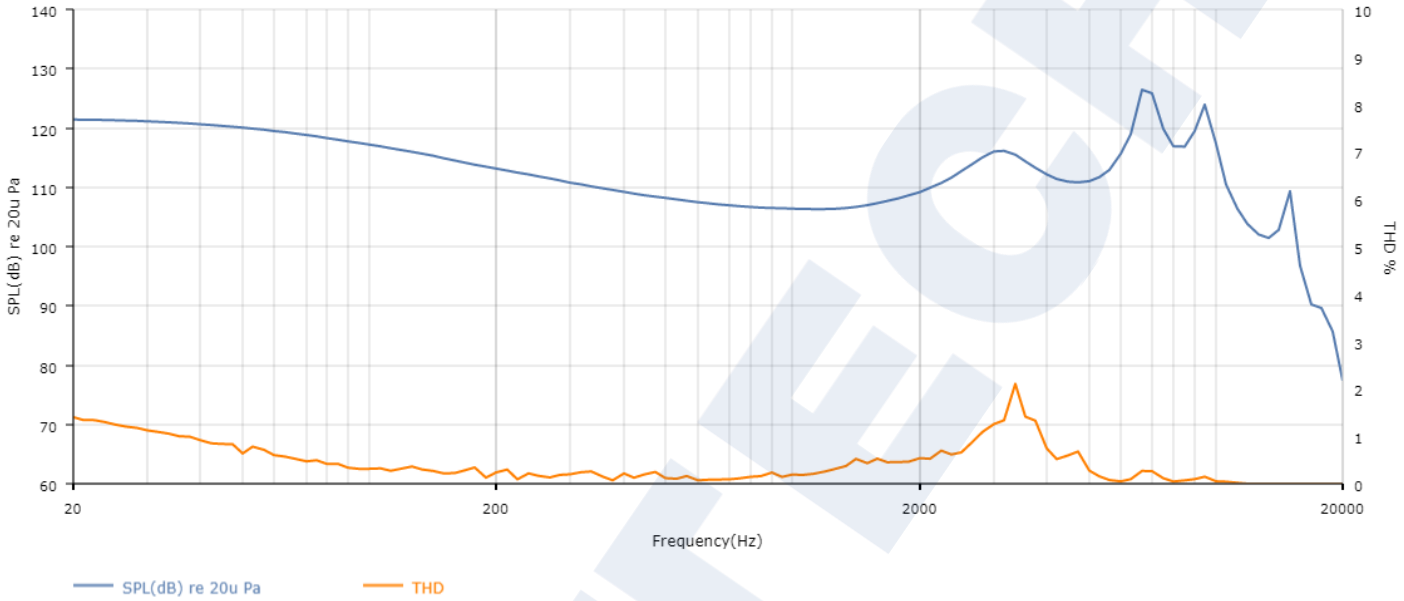
**Features:**

|                       |                               |
|-----------------------|-------------------------------|
| Transducer            | 8CY-16.0 $\Omega$             |
| Insert Molding        | Molding PC                    |
| Injection Basket/Yoke | $\varnothing$ 8mm PC          |
| YOKE                  | $\varnothing$ 7.2mm SPCC/CR3  |
| Magnet                | $\varnothing$ 7.2mm NdFeB-N45 |
| Washer (T-Plater)     | $\varnothing$ 6.7mm SPCC/CR3  |
| PCB                   | $\varnothing$ 6.8*0.4mm FR4   |
| Diaphragm             | $\varnothing$ 7.45mm PU+PEEK  |
| Voice Coil            | $\varnothing$ 3.1mm DCCA      |
| Grill Cover           | NON                           |
| Mesh                  | 550mesh                       |

**Transducers Properties:**

|                    |  |
|--------------------|--|
| Transducer         | $\varnothing$ 8mm  |
| D.C.R.             | 16 $\pm$ 15% $\Omega$                                      |
| Sensitivity        | 105 $\pm$ 3dB (at 1KHz 1mW)                                |
| Frequency Response | 20~20KHZ   |
| Distortion         | THD (50~10KHz) $\leq$ 3%                                   |
| Rated Input Power  | 3mW  |
| Max Input Power    | 5mW  |
| Buzz and Rattles   | Shall Be Rated Input Power 3mW Program Source Or Sine Wave |

## ◆ S. P. L Curve:



## ◆ Transducer front and side images:

